

WATH CENTRAL PRIMARY SCHOOL



WELCOME TO EARLY YEARS FOUNDATION STAGE



Wath Central Primary School is a vibrant learning community where everyone's contribution makes a difference.

As a school at the heart of its community, we pride ourselves on our inclusive ethos and commitment to provide the very best learning opportunities for each child. Through our enjoyable and exciting curriculum the children are motivated to achieve high standards and aspire to reach their personal goals.

CONTACT DETAILS

Fitzwilliam Street
Wath Upon Dearne
Rotherham
S63 7HG

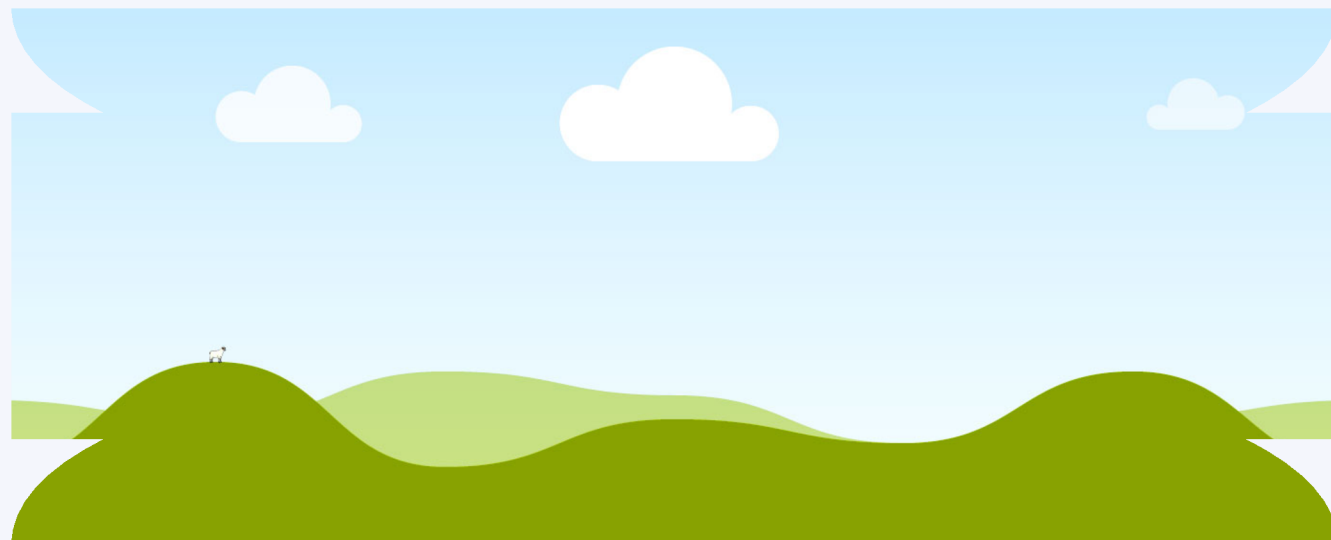
Headteacher: Ms Jude Gray
Email: school@wcp.jmat.org.uk
Telephone: 01709 760345
<https://www.wathcentral.co.uk>

Our school office is open 8.30am - 3.30pm
Mrs McMullen, Mrs Hopwood and Mrs Butterworth are happy to answer any questions you may have.

OUR STAFF



MEET THE TEAM
IMPORTANT
TIMES



FIRST YEAR OF SCHOOL

Throughout their first year in school your child is encouraged to become a motivated learner and thinker, eager to be curious about their world.

At Wath Central we recognise the individuality of each child and family and therefore we will work in partnership to ensure your child makes the best possible progress. We encourage our children to be active, responsible learners, developing independence, confidence and an eagerness to question what they discover.

IMPORTANT TIMES

- School gates open daily at 8.25am.
- Children are met at the playground gate or. Nursery door by a member of their classroom staff.
- The school day starts at 8.30am and finishes at 3.15pm for F1. Morning Nursery session is 8:30am - 11:30am and Afternoon Nursery is 12:15pm - 3:15pm.
- All children will be dismissed by a member of staff at the end of the school day.

SAFEGUARDING

Prior to starting school, you will be sent several forms that you will need to complete and return to us. On the Student Data form, please include the names of all adults who are able to collect your child from school.

If your child is being collected by a different adult not indicated on your form, you must inform the classroom staff/school office prior to collection, otherwise we will not release your child until we have spoken to the person with parental responsibility.

OUR VALUES



SCHOOL
VALUES

Throughout your child's time at Wath Central we are keen to promote our school values through all areas of school life:

The aim of our values throughout our foundation curriculum encourages children to be kind, caring individuals who respect and value others within our community, competent learners and self reliant, confident team members who are given every opportunity to develop the skills and knowledge to cope with the world around them.



ARBOR

We are a cashless school and use the online payment system Arbor for breakfast club, wraparound care, trips, after school clubs etc. Payments are easy to make online using a debit or credit card. The school office can assist you with any payments you need to make.

SNACK TIME & FREE SCHOOL MEALS

Children in F1 and F2 will be offered a daily fruit snack and milk. These are free and we encourage all children to partake. If your child has any allergies/intolerances please ensure you complete this information on the Student Data form.

Your child will need to bring a refillable water bottle daily, please ensure you mark their name on this. Please do not send any other drinks to school.

For F2 children, School meals can be ordered on school grid. Universal Infant Free School Meals are available for all children in Reception class, F2, up to the end of Year 2. However, if you are in receipt of certain benefits we encourage you to apply for free school meals as this entitles you to additional benefits. Currently this includes school holiday food vouchers, help towards the cost of school visits/after school clubs. It is a valuable source of income to school in the form of the Pupil Premium Grant.

F1 children accessing a 30hours funded place may order a school lunch at a cost of £.....

Please see : <https://www.rotherham.gov.uk/benefits/apply-free-school-meals>

STRETCHED FUNDING



CHILD CARE

HOW THIS AFFECTS YOUR SCHOOL PLACE

Please note that stretched funding is not available in UK schools as we operate on a term-time only basis..

If your child previously attended a private nursery and you chose to use stretched funding, this will affect the number of Universal (15 hours) or Extended (additional 15 hours) free childcare hours that can be accessed once your child starts at school nursery.

This is because stretched funding spreads your child's annual entitlement across more weeks, resulting in fewer free hours per week, stretched over a longer period of time to provide consistent year round childcare. As a result, some of the yearly funded hours may already have been used before your child joins school nursery.

When your child moves into school, only the remaining balance of their funded hours can be used for that funding year. Schools are only able to claim term-time funding, not stretched funding, so any hours already taken cannot be reallocated. This does not mean your entitlement has changed, but rather that the funded hours have been used earlier in the year.

If you are unsure how this may affect your child's hours, we recommend speaking directly with your previous childcare provider or your local authority for clarification.



WRAPAROUND CARE

Before and After School Childcare is available Monday to Friday and during the school holidays. This is onsite and run by Fun4U2.

Children will have access to games, crafts, paper and pens and the occasional TV session. They will be encouraged to be involved in making their own food to support independence, under full adult supervision.

Please contact them directly for more information and to make bookings. They can be contacted on



ENCOURAGING NATURAL CURIOSITY



OUR ENVIRONMENT

Our foundation area as a whole has been carefully designed to encourage and develop your child's natural curiosity.

They will discover their own talents, become more independent, more confident and through these opportunities enjoy their learning which we believe is key to progression.

Through the experiences our foundation unit provides, our aim is to encourage our children to develop positive relationships and friendships and understand their feelings and the feelings of others.

At Wath Central we believe in a balance between child-initiated learning and adult-led tasks, therefore raising children's self-esteem and promoting belonging within the group and we feel the layout of our provision both supports and facilitates this.



PE SESSIONS

Our timetabled PE sessions do not take place in our outdoor learning area as it is important for the children to focus on the value of exercise and specific skill teaching away from their free flow play equipment.

We have a PE session each week that take place on the playground, or field. Children should attend school wearing PE on this day. Your class teacher will be in touch with more details about this.

PHOTOGRAPHS

Photographs of your child in school are important to document their learning journey. We also love to share what we are doing in school and children enjoy seeing themselves in photographs.

We must obtain consent from the parent/guardian/carer before we are able to take these. Please consider carefully whether you would like to see photographs of your child's school life and complete the relevant section on our consent form.

UNDERSTANDING THE WORLD

We value the importance of role-play to develop language and communication, imagination, interaction and negotiating skills as children learn a great deal of self-regulation through the play they choose with adults to model play where necessary and support all children who want to join in therefore helping children to extend their play and have a wider understanding of the world.

We have a variety of construction bricks, planks and blocks available along with cones, tool kits, hard hats and Hi-Viz! This is a great activity to develop team work.

We have toy vehicles for our outdoor area and a roadway which is marked out, including traffic signal for our range of scooters, balance motorbike and go carts. This area is very popular and necessary to develop the skills of turn taking and sharing.

The above skills can also be developed in our gardening area, where children are encouraged to care for the natural world around us and become familiar with the plants they grow and the animals they see.

OUR CLASSROOMS



OUR ENVIRONMENT

We offer a wide range of learning areas including small world, construction, reading, role play, painting, dough, workshop, mark making, light and shadow play, sand, and water.

We are very fortunate to have a self-contained unit with its own cloakroom and toilets, meaning children do not need to leave the learning area during learning time. This supports independence and helps maintain continuity throughout the day. At the front of each room, we have a whole-class carpet area used for teaching sessions. This space provides opportunities for children to listen to one another, share ideas, express opinions, and ask and answer questions. Across the rest of the classroom, free-flow learning areas are carefully arranged. These include a construction area with a variety of wooden blocks in different shapes and sizes, a creative/making area, and role-play spaces such as a kitchen/café, car garages, train sets, and a puppet theatre.

A variety of resources are provided that support the development of fine motor skills, helping children strengthen pencil grip and scissor control. Playmobil areas encourage imaginative play and language development and are adapted to reflect each half-termly theme. For example, during a "People Who Help Us" topic, children can explore hospital, ambulance, police, and fire station setups with emergency vehicles, allowing them to act out real-life scenarios.

We also provide a well-stocked reading area that children can access independently throughout the day.



OUTSIDE SPACE

This is a lovely space, both in size and provision possibilities which offer the best contribution to your child's learning through carefully planned and structured play, activities and teaching. This area is self-contained with access for foundation children only as it is our learning area and classroom. It can be reached by the children from the classroom where they can work under the canopy on a range of phonics, maths and investigative activities which mirror or extend those activities inside.

There are easels for creative art work as well as chalk for mark making and independent writing. There is also sand and water play, a play house and picnic area with a river pathway and pirate ship. Our children love our mud kitchen and outdoor restaurant. There is a stage with seating area to perform our fairy tales and balance/climbing equipment to develop gross motor skills.



TRANSITION

We look forward to meeting your child at our transition sessions. These sessions are a great opportunity for your child to actually have a mental photograph of their school world over the summer holidays.

They will meet new children who they will spend their primary school life with, many will remain friends for life.

If you feel you have any concerns about your child starting their school journey that may require them to have additional transition time in school then please do let us know.

More details about dates and times of these sessions will be communicated with you nearer the time.



STARTING
SCHOOL



SCHOOL LIFE

Most children settle into our school very quickly and are happy and eager to arrive, but for some this can take a little longer as they are getting used to a new environment and routines.

It is important that we recognise each child as an individual to ensure their transition into school is as smooth as possible, therefore working together with parents and having a clear strategy in place when your child comes into school each morning is something we believe to be vitally important.

We strive hard to ensure transition into our school meets the needs of each child to ensure they feel confident and have ownership of their school world. Please do not worry if your child is reluctant, starting school is a big step for all concerned and you are welcome to contact school at any time to check how they have settled.

UNIFORM

School uniform plays a key role in promoting pride, self-confidence, and a feeling of belonging. These factors contribute to positive wellbeing, removing the additional pressures of deciding what to wear and added stress of meeting the expectations of their peers. Please see our uniform checklist for full details of what your child should be wearing. You can purchase items embroidered with the school logo, but these are not compulsory.

Please ensure you label **all** your child's clothing to help us return mislaid items, including shoes. You don't need to buy expensive name labels, you can use a biro to write on the size label and it won't come off in the wash.



HOW CAN I SUPPORT MY CHILD BEFORE STARTING AT SCHOOL?



SUPPORTING
YOUR CHILD

Practise the skills that will help your child be independent, especially identifying their possessions like their coat, shoes and book bag as well as dressing themselves.

Ensure your child can go to the toilet independently.

Your child will not be expected to read or write but should recognise their name and if possible before starting F2 be able to write their first name. Remember to use a capital letter and not the initial letter sound.

Build social skills- sharing and negotiating are key to success so play games that involve turn taking and build an understanding of winning and losing.

Children feel more confident at school when they can explain themselves and ask for what they need. Talk about the world around them and encourage their responses. It is important your child becomes a confident communicator.

Talk positively about school, emphasising the element of fun, varied opportunities and experiences they will have as this approach will also help deal with any fears they may have.

If your child has any additional needs that would prevent any of the above being achieved, please feel free to speak to us and we will ensure strategies are in place.



HOW CAN I SUPPORT MY CHILD DURING THEIR FOUNDATION YEARS?

- Talk about your child's school day.
- Talk to staff - no worry is too small.
- Tell us if there has been a change in your child's life e.g. a separation, or death of a relative/pet as this can explain a change in behaviour.
- Celebrate the work they bring home - they are special, and will have taken time, concentration and care to produce something they want you to value. Try to display some of this work at home.
- Celebrate their achievements, star of the week or a text from school to home.
- Ensure you are on time for the start of the school day. This allows your child to see their friends and to come in together for register and be ready to learn.
- Ensure you are on time to collect your child. Your child will be tired at the end of the school day and they will be looking for you. Please let us know if you are delayed as we can speak to your child and explain before home time.
- Parents in partnership working together with the same message/ goal for the child. Our aim in Foundation is to start your child on their journey through school in the best possible way, we are committed to ensuring they are happy individuals who flourish and thrive and the opportunities we provide will equip them with the skills needed to extend their knowledge encouraging your child to know they will succeed.

HOW WILL MY CHILD BE ASSESSED?



ASSESSMENT ATTENDANCE

Throughout their foundation stage your child is constantly being assessed throughout all sessions including:

- Free flow activities
- Whole class carpet sessions
- Supported group work
- 1-1 sessions

You will be informed of your child's progress in a variety of ways:

- Physical learning journey comprising of snap shots of key experiences in your child's development, with examples of work showing progression in the key areas of the foundation curriculum. This will be recorded using 'Learning Journals' app.
- Parent evenings throughout the school year
- Daily opportunities to speak to a member of the team at drop off and collection times
- Appointments can be arranged, and we can meet either in person or chat via phone call

Please be reassured if you feel something needs to be discussed, it is important to you therefore it is important to us.

We have strong links with the Year 1 team to ensure a smooth transition at the end of the summer term. We have staff meetings during this time to discuss each child, this includes assessment information, sharing relevant data and also talking about each child individually; their likes/dislikes, friendships, medical needs etc to ensure Year 1 staff have a clear picture of your child before they become part of their class.

ATTENDANCE MATTERS

We of course aim high and want all our students to be in 100% of the time as we know there are strong correlations between this and achievement. Our minimum expectations is 96%, within the Attendance policy (found on our website) you can see the interventions that are put in place if 96% is not met.

If your child is unwell for any reason, please telephone the school office before 9am and leave a message on the absence line, giving your child's class, full name and reason for absence.

If you wish to take your child out of school for a holiday, please ensure you complete a holiday request form. This can be obtained from the school office or is available on our website.

Please note that once your child enters full time education (Foundation Stage 2) the Academy will not authorise leave of absence during term time unless there are exceptional circumstances.



We hope that this information has been helpful to you and we look forward to working with you and your child in the future.